

ASEAN OPTIMIST SAILING CHAMPIONSHIP 2006
SINGAPORE
01 – 11 November 2006
NOTICE OF RACE

1. VENUE

The ASEAN Optimist Sailing Championship will be held from 01 to 11 November 2006 at the National Sailing Centre, Singapore.

2. ORGANIZING AUTHORITY

The event will be organised by the Singapore Sailing Federation in conjunction with the Indonesia Sailing Federation.

3. LANGUAGE

English shall be the official language for the championship.

4. RULES

4.1 The Championship will be sailed under the following rules:

- The 2005-2008 Racing Rules of Sailing (RRS)
- The current Class Rules and Conditions of the Optimist Class
- The Final Notice of Race
- The Sailing Instructions and Supplementary Sailing Instructions

4.2 The event is designated Category A in accordance with RRS Appendix 1. All competitors may be required to display the event sponsors advertising on each side of the hull.

4.3 Sailing Instructions and supplementary Sailing Instructions will be available during registration at the Regatta Office.

5. INTERNATIONAL JURY

An International Jury will be constituted in accordance with RRS Appendix M, decisions of the International Jury are final and not subject to appeal. Decisions of the International Jury will be final as provided in RRS 70.4.

6. ELIGIBILITY

6.1 Competitors shall comply with ISAF eligibility requirement in accordance with RRS Appendix 2. Each National Authority may enter:

- 5 Sailors born in 1991 or later.
- 1 Country Representative.
- 1 Team Manager.
- 1 Coach.

6.2 It is recommended to have at least one sailor of the opposite gender should the team have five sailors participating.

6.3 The host may enter 2 teams for team racing and up to 20 sailors for the fleet racing.

7. FORMAT OF THE CHAMPIONSHIP

- 7.1 For individual events, if more than 80 entries are received, the fleet will be divided into four groups (with the same number of boats as far as possible). Each race shall consist of 2 groups racing together and where possible each group shall race each other group an equal number of times.
- 7.2 All teams that have 4 or more sailors will race in the Team Racing Category according to the format to be described in the Supplementary Sailing Instructions.

8. PROGRAMME

Day	Date	Programme
Wed	01 Nov	Early Arrival, Measurement & Registration
Thu	02 Nov	Official Arrival Day, Measurement & Registration
Fri	03 Nov	Measurement & Registration, Practice Race, Opening Ceremony & Welcome Dinner
Sat	04 Nov	Fleet Racing
Sun	05 Nov	Fleet Racing
Mon	06 Nov	Lay Day
Tue	07 Nov	Team Racing
Wed	08 Nov	Team Racing
Thu	09 Nov	Fleet Racing
Fri	10 Nov	Fleet Racing, Closing Ceremony
Sat	11 Nov	Official Departure Day

9. SCORING

- 9.1 The Low Scoring System, RRS Appendix A will apply.
- 9.2 The series will consist of up to 12 races for the Individual Event competitions.
- Where racing in groups;
- (a) a race will be defined as one complete series of 2 starts and finishes of all 4 groups.
- (b) each race of two groups will be scored as one race. Only races that have been completed for all 4 groups will count.
- 9.3 When 6 or fewer races have been completed, a boat's series score will be the total of her race scores.
- 9.4 When 7 or more races have been completed, a boat's series score will be the total of her scores excluding her worst score.
- 9.5 When 9 or more races have been completed, a boat's series score will be the total of her scores excluding her two worst scores.

10. PRIZES

Open Division	1 st to 15 th
ASEAN Boys Division	1 st to 5 th
ASEAN Girls Division	1 st to 5 th
Non-ASEAN Division	1 st to 5 th
Team Racing Open	1 st to 3 rd

11. SAFETY

- 11.1 In addition to IODA Class Rules 4.2(A) and (B), 4.3(A) and (B), each boat shall have on board a secured paddle with a blade surface of not less than 0.025 square meter and each competitor shall carry a whistle tied to his/her body or clothing. Competitors not complying with this instruction will be attributed a penalty of 5 points for each race of the days on which they have failed to observe this instruction.
- 11.2 Adequate personal buoyancy shall be worn at all times while afloat. Wet suits and dry suits do not constitute adequate personal buoyancy. If the buoyancy device is of an inflatable type, it shall be inflated at all times while afloat. This changes RRS 40.

12. SUPPORT BOATS

- 12.1 The Team leader or coach will share a support boat with one other country. Please refer to Appendix A for the support boat charter fee.
- 12.2 No more than one person from each team shall be on-water in the boat at the same time. All support boats shall comply with the rules established by the Race Committee.
- 12.3 No other individual team support boats shall be used.
- 12.4 Support boats will be available from 03 November 2006 until the end of the championship.
- 12.5 Please contact the Organising Committee for support boat reservations.

13. MEASUREMENT

- 13.1 Competitors are allowed to use only one of the following: hull, daggerboard, rudder (with tiller and extension), mast, boom, sprit and sail during the event. This part of equipment will be measured by the Measurement Committee.
- 13.2 Substitution of damaged equipment may be permitted subject to approval from the Race Committee.
- 13.3 Only boats officially chartered for the regatta through the Organising Committee must carry national letter(s) or Sail Numbers in contravention of the Class Rules. The National Letter (s) to be carried shall be those of his country entering the chartered boat.

14. PROTEST

Boats are not exempted from displaying a red flag according to the second sentence of RRS 61.1(a), this changes RRS 61.1(a), third sentence. A boat required to display a flag shall do so until she is no longer racing and shall inform the Race Committee of the boat being protested immediately after finishing. This amends RRS 61.1(a), fourth sentence.

15. LIABILITY

- 15.1 Participants compete in this event entirely at their own risk and responsibility.
- 15.2 The Organising Committee and any other party involved in the organisation of the event accept no liability whatsoever for any injury, damage, loss or claim, whether personal or material, incurred by or inflicted to participant before, during or after the event.

16. INSURANCE

All competitors and boats are required to have appropriate insurance coverage.

17. ENTRY FEES

Please refer to Appendix A for the entry fees.

18. PAYMENT INSTRUCTIONS

The entry fees and support boat charter fees shall be paid upon arrival.

19. ACCOMODATION

- 19.1 The official hotel is the Grand Mercure Roxy Hotel.
- 19.2 The hotel is located 10 minutes away by car from the National Sailing Centre.
- 19.3 Teams are required to contact the hotel directly to book their accommodation. Contact details, room rates and booking instructions are detailed in Appendix A.

20. EARLY ARRIVALS

Teams who wish to arrive before the official arrival day and require early accommodation at the official hotel should also contact the hotel directly to book their accommodation.

21. CHARTER BOATS

- 21.1 Charter boats will be supplied by Xtreme Sailing Products and will be available from 01 November 2006.
- 21.2 Each boat includes all fittings, blocks, ropes (mainsheet & painter line), padded toestrap, 3 airbags, Epoxy One Design Racing dagger & rudder with aluminium tiller & tiller extension, and black gold racing spars (mast, boom, & sprit + all fittings)
- 21.3 Sails shall not be supplied. Competitors may bring and use their own foils, spars and fittings.

- 21.4 Teams wishing to book early charter boats shall contact the Organising Committee for reservations.
- 21.5 Please refer to Appendix A for the boat charter fees and damage deposit.
- 21.6 Due to time constraints, only 60 boats are available for charter.

22. TRANSPORTATION

- 22.1 The hotel is about 20 minutes away from the airport by car.
- 22.2 Teams will be met at the airport and transport to the hotel will be arranged. Please notify the Organising Committee of arrival details in advance.
- 22.3 Daily transport between the National Sailing Centre and the hotel will be provided during the championship.

23. MISCELLANEOUS

Each team is kindly requested to bring its national flag (100cm x 150cm), and National anthem recorded on CD.

24. CONTACT

For further information or queries, please contact:

Singapore Sailing Federation

1500 East Coast Parkway, National Sailing Centre,

Singapore 468963

Tel: +65 64444555

Fax: +65 64480485

Event Website: <http://aseanopti2006.sailing.org.sg>

Edwin LOW, Event Chairman

Email: edwin@singaporesailing.org.sg

Or

Meitong LIN / May Ling TEO, Event Secretariat

Email: info@singaporesailing.org.sg

APPENDIX A

1. ENTRY FEES

Entry Fees will be SGD 750 per sailor, inclusive of the following:

- Boat Charter
- Boat Damage Deposit
(SGD 150 – payable in Cash only: will be refunded if no damage occurs)
- Packed lunches from 03 – 10 Nov

Entry Fees are to be paid upon arrival.

2. ACCOMMODATION

Grand Mercure Roxy Hotel

Preferential room rates at the Grand Mercure Roxy Hotel are as follows:

- Single Room: SGD 145 nett with daily buffet breakfast
- Double Room: SGD 160 nett with daily buffet breakfast
- Triple Room: SGD 225 nett with daily buffet breakfast

Please quote “ASEAN Optimist Championship” during booking to enjoy the special rates.

Please contact the hotel directly to reserve accommodation. The hotel contact details are:

Grand Mercure Roxy Hotel

Address: 50 East Coast Road
Roxy Square
Singapore 428769

Tel: +65 63448000

Fax: +65 63448010

Website: <http://www.accorhotels-asia.com/3610/detail/default.aspx>

Reservation E-mail: sales@grandmercuroxy.com.sg

3. SUPPORT BOAT CHARTER FEES

The support boat charter fee will be SGD 150 per country, inclusive of petrol for the duration of the championship.

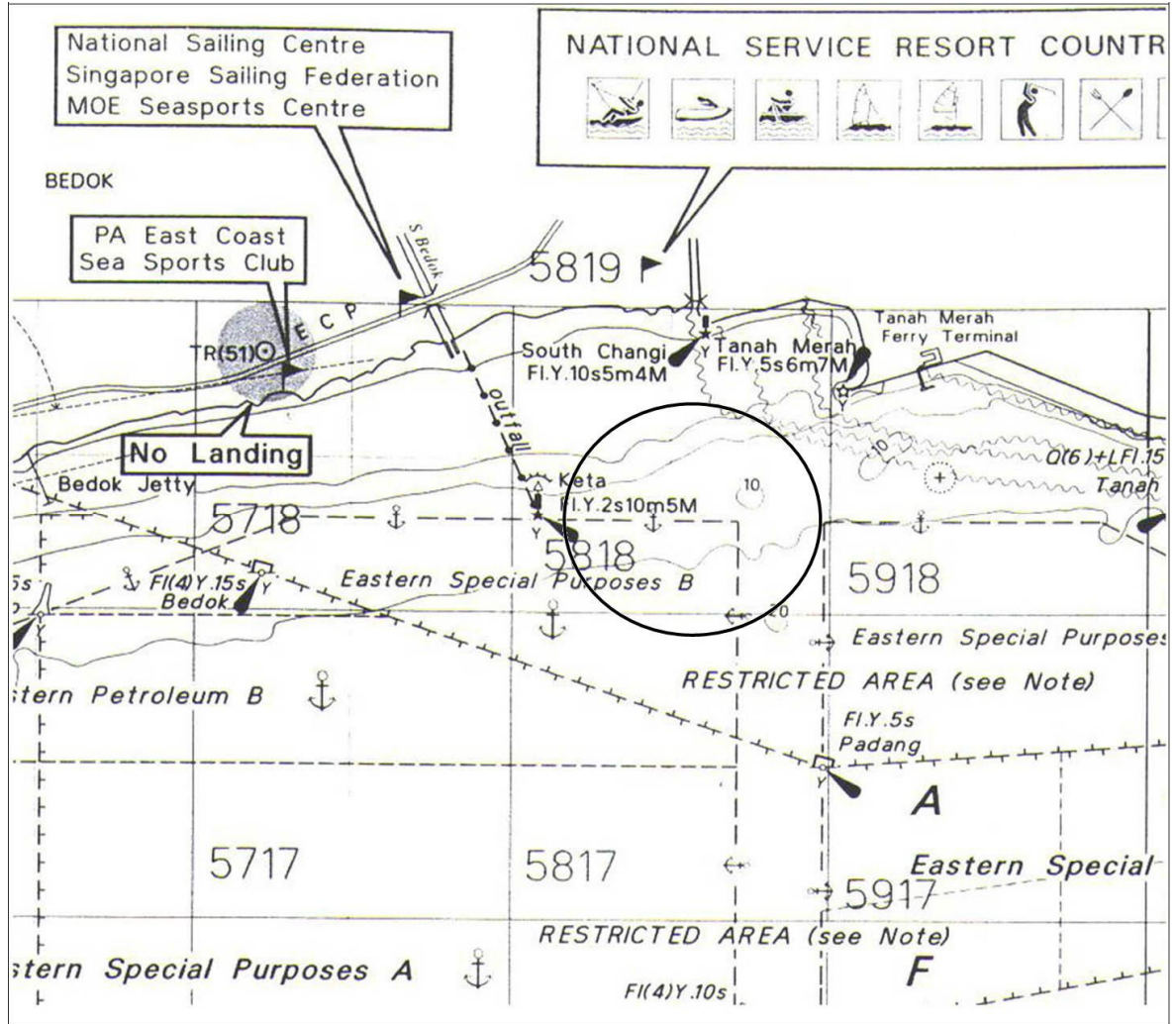
Support boat charter fees are to be paid upon arrival.

4. PAYMENT MODE

- Cash in Singapore Dollars,
- VISA or MasterCard

APPENDIX B

Racing Area:



ASEAN OPTIMIST SAILING CHAMPIONSHIP 2006 SINGAPORE

ENTRY FORM

Please return this form not later than **Friday, 13 October 2006:**

Singapore Sailing Federation

1500 East Coast Parkway
National Sailing Centre
Singapore 468963

Tel: +65 64444555
Fax: +65 64480485

Email: info@singaporesailing.org.sg

Event Website: <http://aseanopti2006.sailing.org.sg>

The Optimist Association of _____ (Country)
would like to participate in the 2006 ASEAN Optimist Championship from 01 – 11
November 2006 in Singapore.

No.	Sail Number	Name of Participant (Please underline family name)	Date of Birth	Gender
1				
2				
3				
4				
5				

No.	Title	Name of Official
1	Country Rep.	
2	Team Manager	
3	Coach	

Flight Details:

Arrival details:	Arrival date & time:	Name of Airline: Flight No:
Departure details:	Departure date & time:	Name of Airline: Flight No:

Contact Person:

Name	Designation	
Address:		
Telephone number:		
Mobile:	Tel:	Fax:
Email:		

INDEMNITY

We understand that the Organising Authority and any other party involved in the organisation of the Championship accept no liability whatsoever for any injury, damage, loss or claim, whether personal or material, incurred by or inflicted to participants before, during or after the Championship.

**President / Secretary General
National Authority / Class Association**

Signature / Stamp

ASEAN OPTIMIST SAILING CHAMPIONSHIP 2006 SINGAPORE

PAYMENT FORM

Please return this form not later than **Friday, 13 October 2006:**

Singapore Sailing Federation

1500 East Coast Parkway

National Sailing Centre

Singapore 468963

Email: info@singaporesailing.org.sg

Event Website: <http://aseanopti2006.sailing.org.sg>

Tel: +65 64444555

Fax: +65 64480485

The Optimist Association of _____ (Country)
would like to participate in the 2006 ASEAN Optimist Championship from 01 – 11
November 2006 in Singapore.

1. Entry Fees

No. of Participants	Entry Fee per Participant	Total Amount (SGD)
	SGD 600	
	SGD 150 (Boat Damage deposit – payable by cash only)	

2. Support Boat Charter Fees

Support Boat Charter – per country	Amount (SGD)
SGD 150	

3. Daily Packed Lunches for Official from 03 – 10 Nov

No. of Packed lunch required	Cost per Person	Dates	Total Amount (SGD)
	SGD 5.00	03 Nov	
		04 Nov	
		05 Nov	
		06 Nov	
		07 Nov	
		08 Nov	
		09 Nov	
		10 Nov	

Total amount to be paid at the registration: (SGD) \$ _____